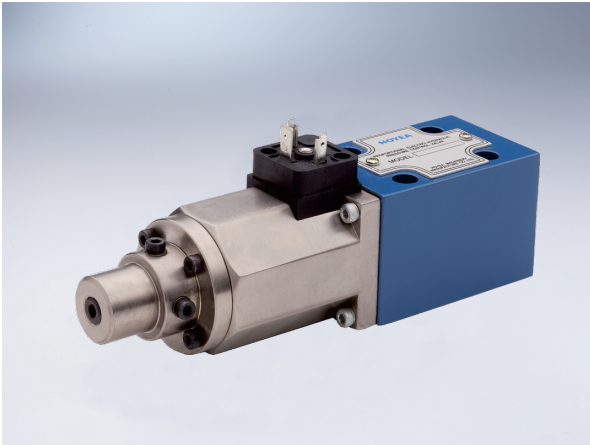


Proportional Directly Operated Relief Valve (BYZ)

Technical specification



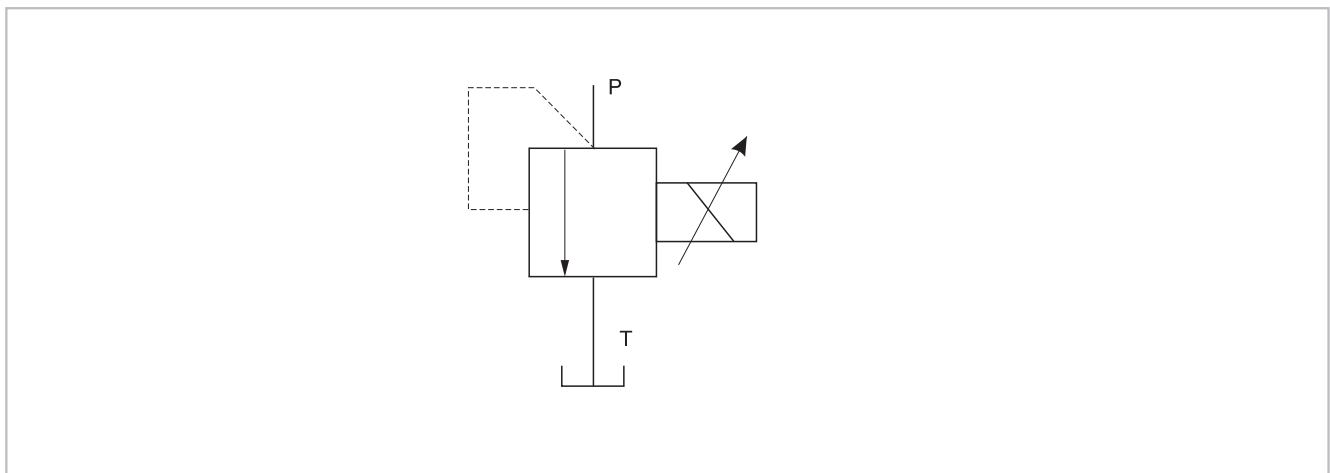
Maximum pressure (MPa)	31.5
Maximum flow (l/min)	2
Minimum flow (l/min)	0.7
Rated current (mA)	800
Coil resistance (Ω)	19.5
Hysteresis (%)	< ± 1.5
Repeatability (%)	< ± 1
Cleanliness	Filter is recommended for the highest fluid pollution degree; the lowest specific filtration resistance according to ISO 4406 (C) 20/18/15.

The valve is a direct operated valve controlled by proportional solenoid, it is mainly used for small hydraulic system according to input current, and always is used to be taken as the pilot relief valve of a second pressure valve.

Model instruction

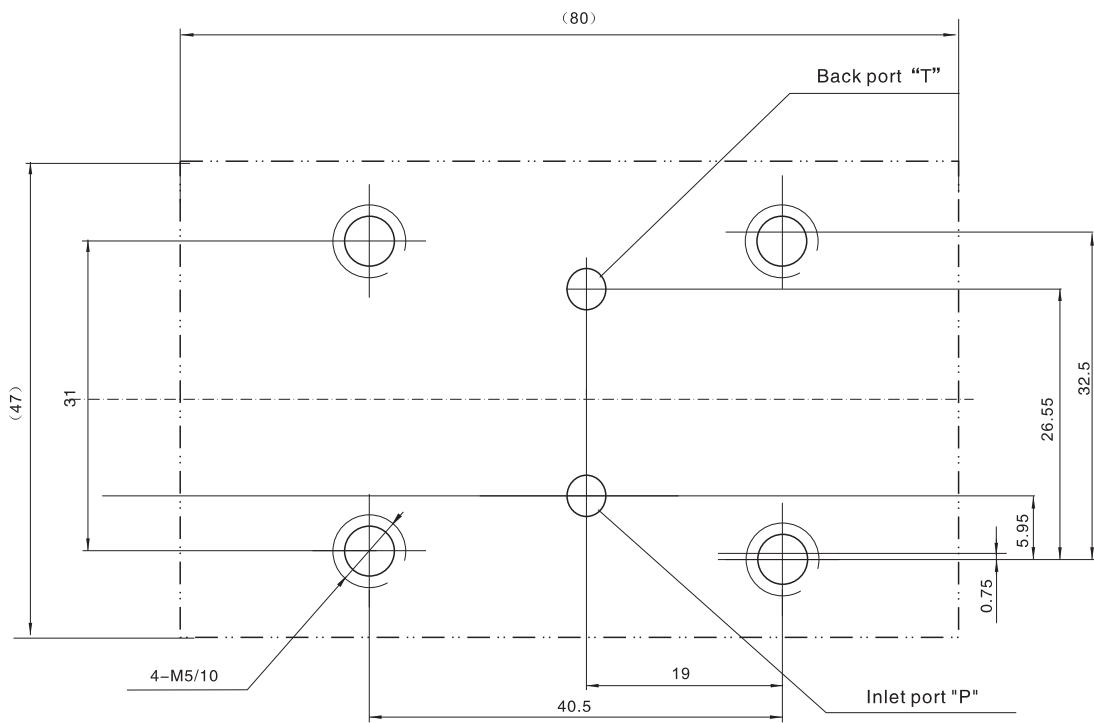
BYZ - 02 - * - 7X - *		Remarks
Proportional directly operated relief valve	Design serial number	
Specification 02 DN 6	Working pressure 7 7MPa 16 16MPa 25 25MPa 31.5 31.5MPa	

Code symbol



Proportional Directly Operated Relief Valve (BYZ)

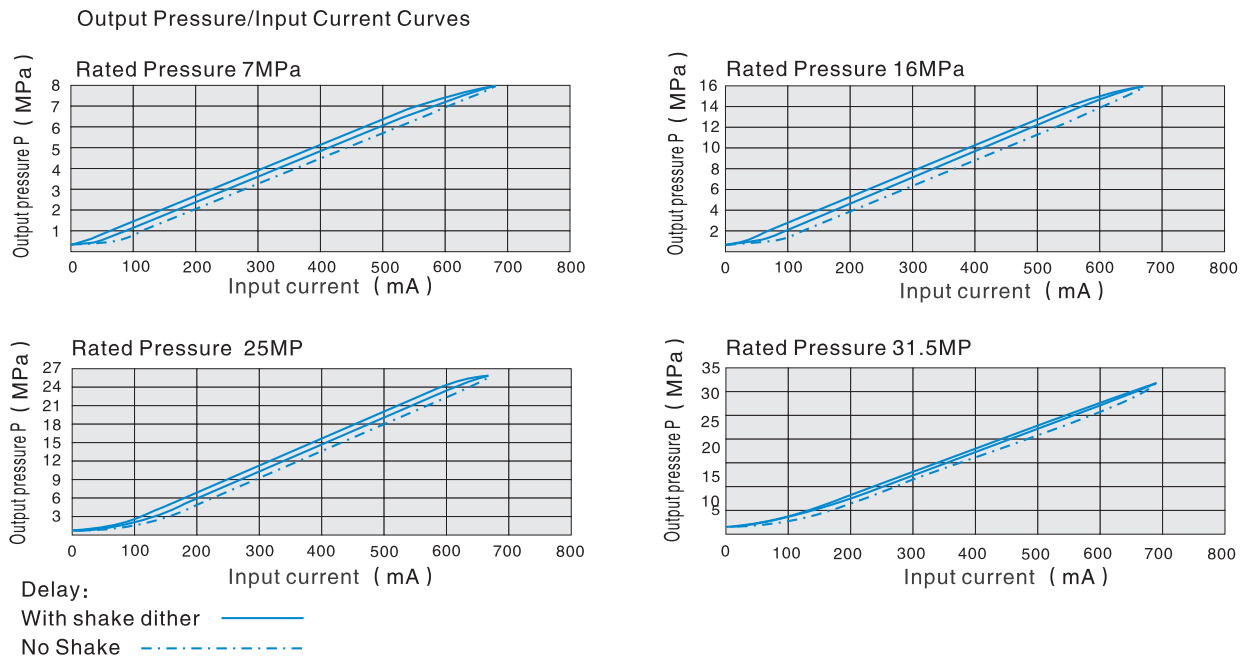
Plate size



The surface, connecting with the valve, should be Ra0.8 roughness, and 0.01/100mm flatness.

Proportional Directly Operated Relief Valve (BYZ)

02 Model Characteristic Curves (Measured at $\nu=36 \times 10^{-6} \text{m}^2/\text{S}$ $t=50^\circ\text{C}$)



70 External dimensions

