

Thread Type 3-way Proportional Reducing Valve



It's driven by proportional solenoid, convert the input signal into the pressure output signal in proportion.

Technical parameter (please consult factory if your application is out of below range)

Model		HY3DREP-G8
Mounting		Free, recommended for horizontal installing
Working temperature	(°C)	-20~+50
Weight	(kg)	2.1

Hydraulic parameter

Max working pressure	(MPa)	20.7
Max flow rate	(L/min)	8
Working fluid		Mineral hydraulic oil, phosphate
Fluid temp range	(°C)	-20~+60
Viscosity range		20~380
Hysteresis	%	≤3
Repeatability	%	≤1
Sensibility	%	≤1
Minimum fluid cleanliness		Maximum permissible degree of pressure fluid contamination to NAS 1638 to class 9 Recommended filter $\beta_{10} \geq 75$.

Electric parameter

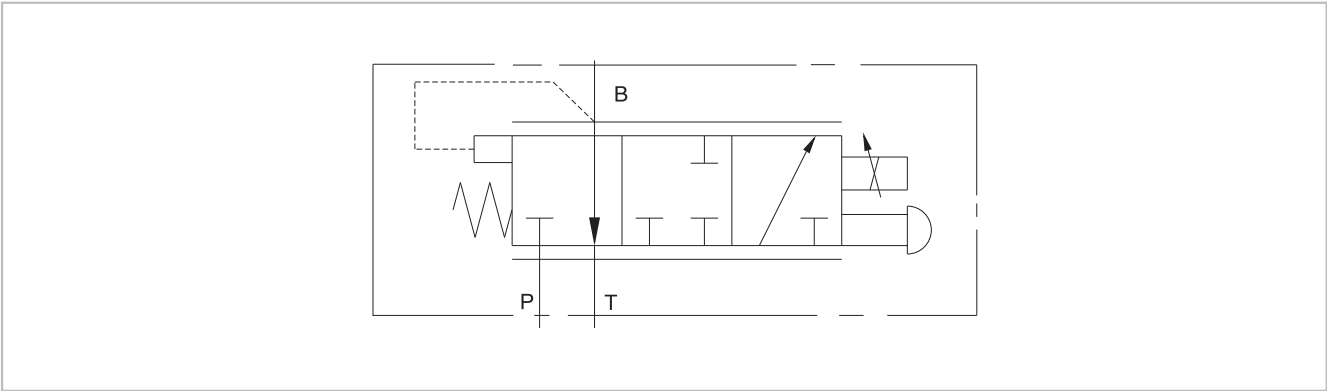
Voltage type		Direct current
Solenoid I-max	(A)	2
Coil resistance at 25°C	(Ω)	8
ED	(%)	100
Max coil temp	(°C)	Attainable 150
Electrical connection		Deutsch DT04-2P
IP class		IP67

Thread Type 3-way Proportional Reducing Valve

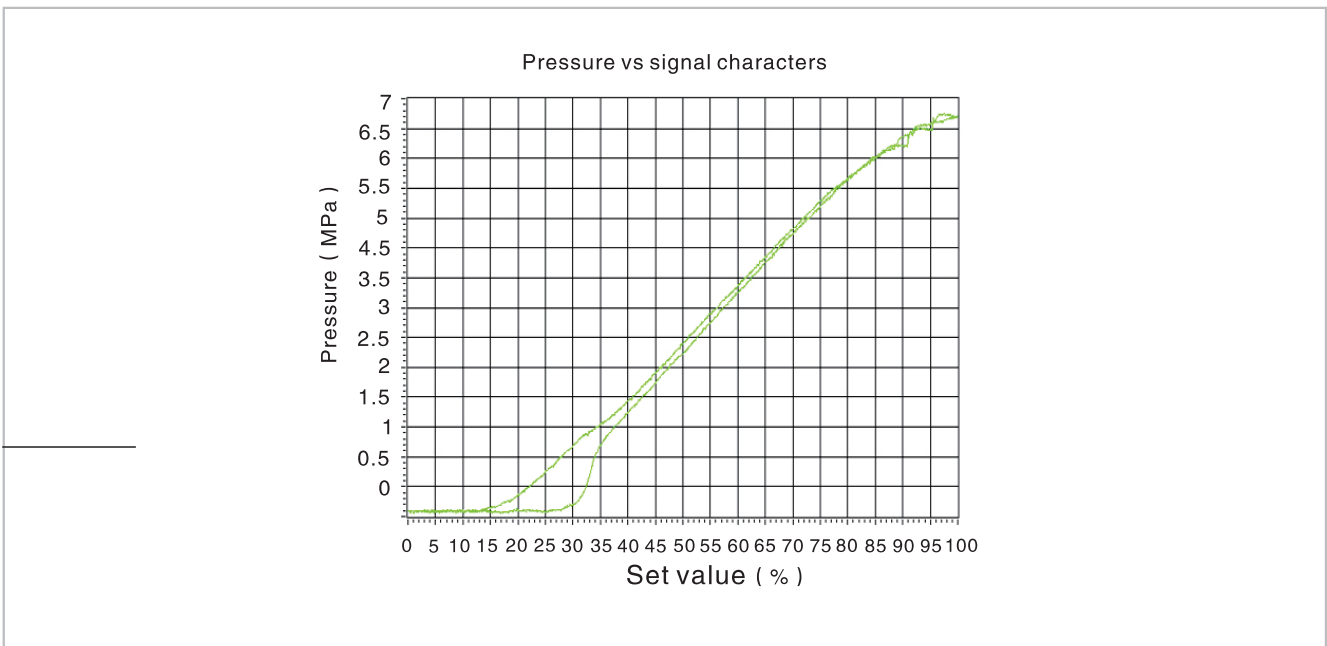
Ordering code

HY 3DREP - G 8 - D24 - * * *		
3-way proportional reducing valve		Remark
Thread type		
Thread size 8 SAE-8		Sealing Omit NBR seal V FPM seal
Voltage type D24 DC 24V		Pressure rating 50 5MPa

Hydraulic symbol



Performance curve



Thread Type 3-way Proportional Reducing Valve

External dimension and thread connection

