

Three-Port Solenoid Directional Control Valve

5404 continue

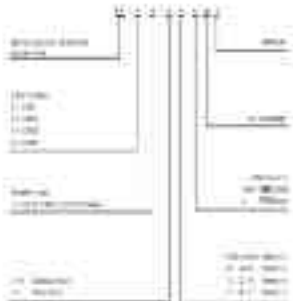


Model	1	2	3	4	5	6
Series	5404					5405
Port	1/2"					3/4"
Material	Copper					Aluminum
Port	1/2"					3/4"
Pressure	50, 100, 150, 200, 300					50, 100, 150, 200, 300
Weight	2.0					2.5
Lead	1					1
Color	Blue					Blue/Black
Notes	1. The valve is not suitable for use in applications where it is exposed to high pressure or high temperature.					

Three-Port Solenoid Directional Control Valve is a three-ported valve that can be used in a variety of applications.

The valve is designed to handle high pressure and high temperature applications. It is also suitable for use in applications where it is exposed to high pressure or high temperature.

5404 (1/2")



Word-Specific Statistical Control Charts

11-10-2006

Control Chart				Control Limits		Center Line	
Chart Type	Control Chart	Control Limits	Center Line	Control Chart	Control Limits	Center Line	
1		$p \pm 3\sqrt{\frac{p(1-p)}{n}}$	p		$p \pm 3\sqrt{\frac{p(1-p)}{n}}$	p	
2		$np \pm 3\sqrt{np(1-p)}$	np		$np \pm 3\sqrt{np(1-p)}$	np	
3		$c \pm 3\sqrt{c}$	c		$c \pm 3\sqrt{c}$	c	
4		$\bar{u} \pm 3\sqrt{\frac{\bar{u}}{n}}$	\bar{u}		$\bar{u} \pm 3\sqrt{\frac{\bar{u}}{n}}$	\bar{u}	
5		$p \pm 3\sqrt{\frac{p(1-p)}{n}}$	p		$p \pm 3\sqrt{\frac{p(1-p)}{n}}$	p	
6		$np \pm 3\sqrt{np(1-p)}$	np		$np \pm 3\sqrt{np(1-p)}$	np	
7		$c \pm 3\sqrt{c}$	c		$c \pm 3\sqrt{c}$	c	
8		$\bar{u} \pm 3\sqrt{\frac{\bar{u}}{n}}$	\bar{u}		$\bar{u} \pm 3\sqrt{\frac{\bar{u}}{n}}$	\bar{u}	
9		$p \pm 3\sqrt{\frac{p(1-p)}{n}}$	p		$p \pm 3\sqrt{\frac{p(1-p)}{n}}$	p	
10		$np \pm 3\sqrt{np(1-p)}$	np		$np \pm 3\sqrt{np(1-p)}$	np	
11		$c \pm 3\sqrt{c}$	c		$c \pm 3\sqrt{c}$	c	
12		$\bar{u} \pm 3\sqrt{\frac{\bar{u}}{n}}$	\bar{u}		$\bar{u} \pm 3\sqrt{\frac{\bar{u}}{n}}$	\bar{u}	

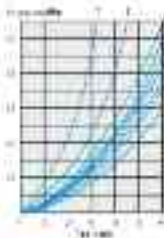
Hand Operated Electrical Control Valve

Hand Operated Electrical Control Valve is used for the distribution of water.



- Hand Operated Electrical Control Valve**
- Hand Operated Electrical Control Valve
 - Hand Operated Electrical Control Valve
 - Hand Operated Electrical Control Valve
 - Hand Operated Electrical Control Valve
 - Hand Operated Electrical Control Valve
 - Hand Operated Electrical Control Valve
 - Hand Operated Electrical Control Valve
 - Hand Operated Electrical Control Valve

Hand Operated Electrical Control Valve is used for the distribution of water.



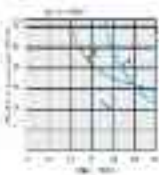
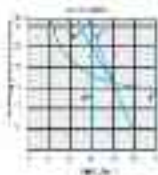
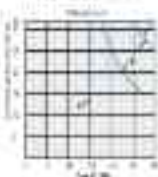
Flow Rate (m³/h)	Pressure Drop (bar)		
	T	E	F
0	0	0	0
10	10	10	10
20	20	20	20
30	30	30	30
40	40	40	40
50	50	50	50
60	60	60	60
70	70	70	70
80	80	80	80
90	90	90	90
100	100	100	100

Hand Operated Electrical Control Valve
 Model: HOC-100
 Pressure Drop: 0.1-10 bar

Wind Speeded Directional Control Valve

How to Use Diagram 1

1. To determine whether a directional control valve is wind speeded, check the wind speeded directional control valve symbol (shown below) against the wind speeded directional control valve symbol (shown below) in the wind speeded directional control valve symbol legend (shown below) in the wind speeded directional control valve symbol legend.



2. To determine whether a directional control valve is wind speeded, check the wind speeded directional control valve symbol (shown below) against the wind speeded directional control valve symbol (shown below) in the wind speeded directional control valve symbol legend (shown below) in the wind speeded directional control valve symbol legend.

3. To determine whether a directional control valve is wind speeded, check the wind speeded directional control valve symbol (shown below) against the wind speeded directional control valve symbol (shown below) in the wind speeded directional control valve symbol legend (shown below) in the wind speeded directional control valve symbol legend.

Symbol	Wind Speeded	Symbol	Wind Speeded
□	Yes	□	Yes
□	No	□	No
□	Yes	□	Yes
□	No	□	No
□	Yes	□	Yes
□	No	□	No
□	Yes	□	Yes
□	No	□	No
□	Yes	□	Yes
□	No	□	No

Manual Operated Directional Control Valve

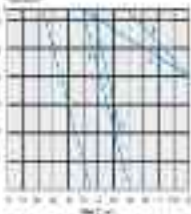
Fig. 10.10. Symbols for Manual Operated Directional Control Valve



Symbol	Symbol	Symbol	Symbol	Symbol	Symbol	Symbol	Symbol

1. Manual Operated Directional Control Valve
 2. Manual Operated Directional Control Valve
 3. Manual Operated Directional Control Valve
 4. Manual Operated Directional Control Valve
 5. Manual Operated Directional Control Valve
 6. Manual Operated Directional Control Valve
 7. Manual Operated Directional Control Valve
 8. Manual Operated Directional Control Valve
 9. Manual Operated Directional Control Valve
 10. Manual Operated Directional Control Valve
 11. Manual Operated Directional Control Valve
 12. Manual Operated Directional Control Valve
 13. Manual Operated Directional Control Valve
 14. Manual Operated Directional Control Valve
 15. Manual Operated Directional Control Valve
 16. Manual Operated Directional Control Valve

Fig. 10.11. Symbols for Manual Operated Directional Control Valve

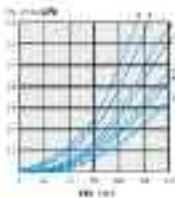


Symbol	Symbol	Symbol	Symbol	Symbol	Symbol	Symbol	Symbol

1. Manual Operated Directional Control Valve
 2. Manual Operated Directional Control Valve
 3. Manual Operated Directional Control Valve
 4. Manual Operated Directional Control Valve
 5. Manual Operated Directional Control Valve
 6. Manual Operated Directional Control Valve
 7. Manual Operated Directional Control Valve
 8. Manual Operated Directional Control Valve
 9. Manual Operated Directional Control Valve
 10. Manual Operated Directional Control Valve
 11. Manual Operated Directional Control Valve
 12. Manual Operated Directional Control Valve
 13. Manual Operated Directional Control Valve
 14. Manual Operated Directional Control Valve
 15. Manual Operated Directional Control Valve
 16. Manual Operated Directional Control Valve

Mixed Operation Electrical Control Valve

11104 Valve (1) (2) (3) (4) (5) (6) (7) (8) (9) (10) (11) (12) (13) (14) (15) (16) (17) (18) (19) (20) (21) (22) (23) (24) (25) (26) (27) (28) (29) (30) (31) (32) (33) (34) (35) (36) (37) (38) (39) (40) (41) (42) (43) (44) (45) (46) (47) (48) (49) (50) (51) (52) (53) (54) (55) (56) (57) (58) (59) (60) (61) (62) (63) (64) (65) (66) (67) (68) (69) (70) (71) (72) (73) (74) (75) (76) (77) (78) (79) (80) (81) (82) (83) (84) (85) (86) (87) (88) (89) (90) (91) (92) (93) (94) (95) (96) (97) (98) (99) (100)



Valve Position (mm)		Valve Stroke (mm)	
0	100	0	100
0	100	0	100
10	90	10	90
20	80	20	80
30	70	30	70
40	60	40	60
50	50	50	50
60	40	60	40
70	30	70	30
80	20	80	20
90	10	90	10
100	0	100	0

11104 Valve (1) (2) (3) (4) (5) (6) (7) (8) (9) (10) (11) (12) (13) (14) (15) (16) (17) (18) (19) (20) (21) (22) (23) (24) (25) (26) (27) (28) (29) (30) (31) (32) (33) (34) (35) (36) (37) (38) (39) (40) (41) (42) (43) (44) (45) (46) (47) (48) (49) (50) (51) (52) (53) (54) (55) (56) (57) (58) (59) (60) (61) (62) (63) (64) (65) (66) (67) (68) (69) (70) (71) (72) (73) (74) (75) (76) (77) (78) (79) (80) (81) (82) (83) (84) (85) (86) (87) (88) (89) (90) (91) (92) (93) (94) (95) (96) (97) (98) (99) (100)

Valve Position (mm)		Valve Stroke (mm)	
0	100	0	100
0	100	0	100
10	90	10	90
20	80	20	80
30	70	30	70
40	60	40	60
50	50	50	50
60	40	60	40
70	30	70	30
80	20	80	20
90	10	90	10
100	0	100	0

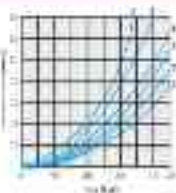
Valve Position (mm)		Valve Stroke (mm)	
0	100	0	100
0	100	0	100
10	90	10	90
20	80	20	80
30	70	30	70
40	60	40	60
50	50	50	50
60	40	60	40
70	30	70	30
80	20	80	20
90	10	90	10
100	0	100	0

Valve Position (mm)		Valve Stroke (mm)	
0	100	0	100
0	100	0	100
10	90	10	90
20	80	20	80
30	70	30	70
40	60	40	60
50	50	50	50
60	40	60	40
70	30	70	30
80	20	80	20
90	10	90	10
100	0	100	0

Valve Position (mm)		Valve Stroke (mm)	
0	100	0	100
0	100	0	100
10	90	10	90
20	80	20	80
30	70	30	70
40	60	40	60
50	50	50	50
60	40	60	40
70	30	70	30
80	20	80	20
90	10	90	10
100	0	100	0

Manually Operated Electrical Control Valve

How to Operate the Manually Operated Electrical Control Valve



Valve Stroke (mm)					
0	10	20	30	40	50
60	70	80	90	100	

1. Open the valve to the full stroke (80 mm).
2. Close the valve to the full stroke (100 mm).
3. Repeat the above steps.

How to Operate the Manually Operated Electrical Control Valve

Valve Stroke (mm)					
Valve Stroke (mm)	Valve Position (mm)				
	0	10	20	30	40
50	60	70	80	90	100

Valve Stroke (mm)					
Valve Stroke (mm)	Valve Position (mm)				
	0	10	20	30	40
50	60	70	80	90	100

Valve Stroke (mm)					
Valve Stroke (mm)	Valve Position (mm)				
	0	10	20	30	40
50	60	70	80	90	100

Valve Stroke (mm)					
Valve Stroke (mm)	Valve Position (mm)				
	0	10	20	30	40
50	60	70	80	90	100

Wind Speed Statistical Control Charts

11 Control Chart: Wind Speed (in miles per hour)



Time (hr)	Wind Speed (mi/hr)				
	100	200	300	400	500
0	0	0	0	0	0
20	10	15	20	25	30
40	20	30	40	50	60
60	30	45	60	75	90
80	40	60	80	100	120
100	50	75	100	120	140
120	60	90	120	140	160

12 Control Chart: Wind Speed

13 Control Chart: Wind Speed

Time (hr)		Wind Speed (mi/hr)				
Time (hr)	Wind Speed (mi/hr)	Wind Speed (mi/hr)				
		100	200	300	400	500
0	0	0	0	0	0	0
20	10	15	20	25	30	
40	20	30	40	50	60	
60	30	45	60	75	90	
80	40	60	80	100	120	
100	50	75	100	120	140	
120	60	90	120	140	160	

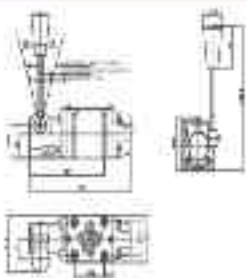
Time (hr)		Wind Speed (mi/hr)				
Time (hr)	Wind Speed (mi/hr)	Wind Speed (mi/hr)				
		100	200	300	400	500
0	0	0	0	0	0	0
20	10	15	20	25	30	
40	20	30	40	50	60	
60	30	45	60	75	90	
80	40	60	80	100	120	
100	50	75	100	120	140	
120	60	90	120	140	160	

Time (hr)		Wind Speed (mi/hr)				
Time (hr)	Wind Speed (mi/hr)	Wind Speed (mi/hr)				
		100	200	300	400	500
0	0	0	0	0	0	0
20	10	15	20	25	30	
40	20	30	40	50	60	
60	30	45	60	75	90	
80	40	60	80	100	120	
100	50	75	100	120	140	
120	60	90	120	140	160	

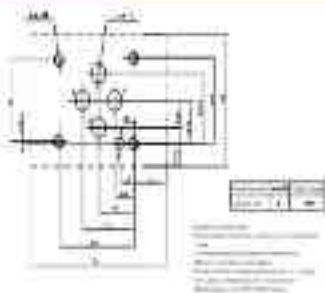
Time (hr)		Wind Speed (mi/hr)				
Time (hr)	Wind Speed (mi/hr)	Wind Speed (mi/hr)				
		100	200	300	400	500
0	0	0	0	0	0	0
20	10	15	20	25	30	
40	20	30	40	50	60	
60	30	45	60	75	90	
80	40	60	80	100	120	
100	50	75	100	120	140	
120	60	90	120	140	160	

Electric Operated Electrohydraulic Control Valve

1.1 Main Dimensions

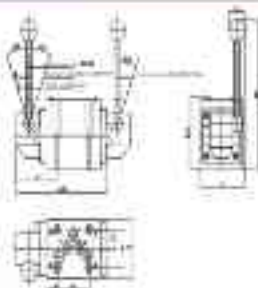


1.2 Hydraulic Schematic

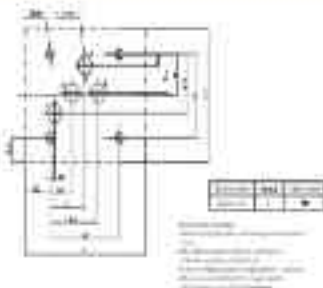


Motor Operated Directional Control Valve

11.11.1 Construction

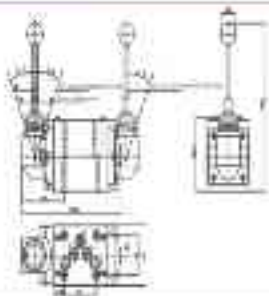


11.11.2 Operation

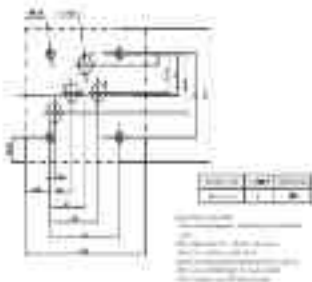


Motor Operated Electrical Control Valve

1100-1000-0000-0000-0000-0000

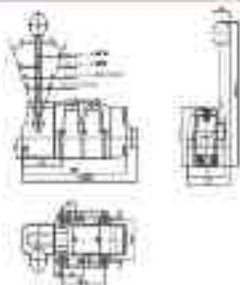


1100-1000-0000-0000-0000-0000

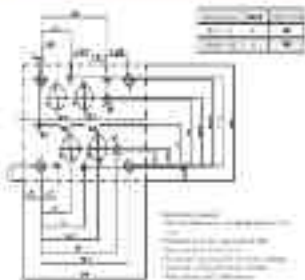


Miscellaneous Electrical Control Valve

Electrical Control Valve

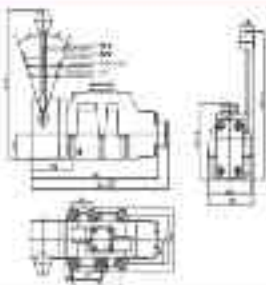


Electrical Control Valve

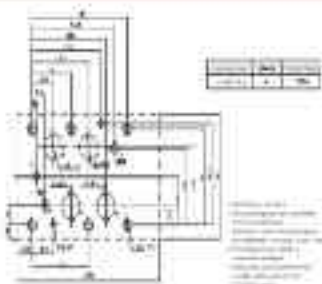


Mech Operated Electrical Control Valve

1.1 Model Selection

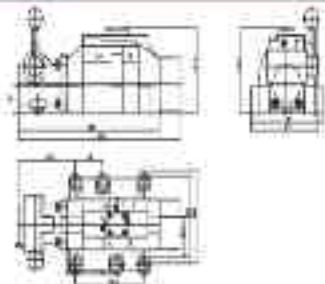


1.2 Electrical Control



Motor Operated Directional Control Valve

Hydraulic Circuit



Hydraulic Assembly

